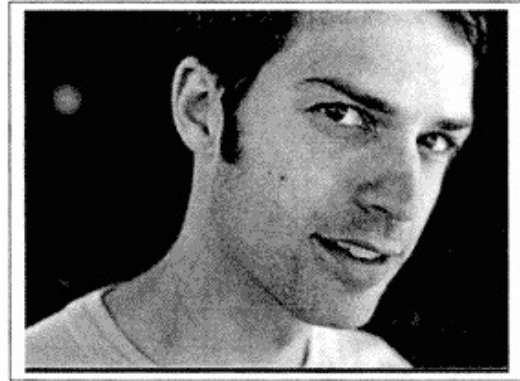


Eli Salzman

251 Dufour Street
Santa Cruz, CA 95060
(831) 460-1467
elisalzman@hotmail.com



Eli has been pushing the edges of soulful singing and songwriting for over a decade. His style is unusually rich and eclectic, drawing from alternative rock, blues, pop and modern influences. Audiences and critics describe his music and lyrics as deeply moving and often playful, sung with an expansive and resonant voice. And with his inventive guitar work, infectious rhythms and improvisations, you get an experience that fits in your ears, gets in your bones and pulls you into territories un-charted by the packaged music world.

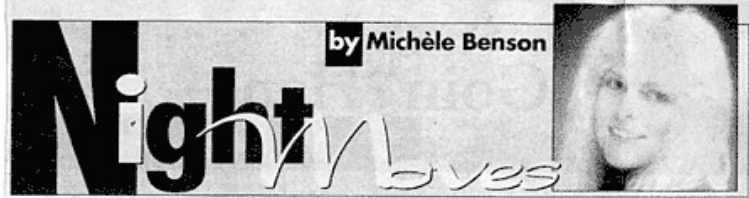
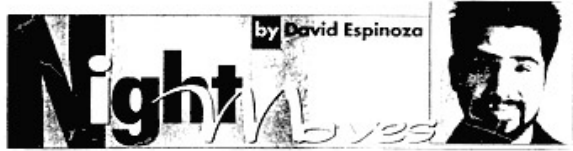
Eli has a live CD out and just released a brand new studio album entitled "Baby Flame" in July 2002. "Baby Flame's" rich and powerful sound marks a new era in Eli's contribution to the world of original music.

"Ever wonder where all the musicians who speak your language are hiding? You could spend weeks and months searching to find music this substantial and inspiring. With a voice deep enough to catch your soul, lyrics tender enough to open your heart, and guitar-playing spicy enough to get your hips swinging, Salzman promises a bluesy, enchanting answer to your deepest musical yearnings."

-Laura Wade, Santa Cruz poet/ performance artist

press clippings

GOOD TIMES, February 25, 1999



What is Salzman?

One local artist I'm especially excited about seeing this week is contemporary folk guitarist **Eli Salzman**. After hearing a demo tape, I'm thoroughly convinced Salzman could be another **Ben Harper**; his soulful voice and equally inspiring guitar work has the makings of greatness.

While the former comparison is due to his musical stylings, Salzman's vocals also contain hints of a blind piano player who made his way onto the funk and R&B scene almost 30 years ago. You can catch Salzman Thursday at What is Art? beginning at 8 p.m. Tickets are \$6.

21 *saturday* eli salzman

If Eli sang nothing but newspaper ads, his voice would still mesmerize an audience. A practitioner of what's known as "new folk," this incredible voice has something to say. The smart wordiness and exacting arrangements on his CD, *Live* (recorded live at the late great What Is Art?), suggest that he skipped the boring, hackneyed chapter in the folk rule book. Eli's beautiful Joni Mitchellesque ballads speak of love, mystery and real life. Cayuga Vault; \$10; 8pm. (Meribeth Malone)

26 Music | July 26–August 2, 2000 | Metro Santa Cruz

Sights and Sounds

Progressive Folk

Singer and songwriter **Eli Salzman** owns up to prog-rock influences

AFTER ROUGHLY TWO YEARS worth of brief interviews with local singer/songwriter **Eli Salzman**, I've finally gotten close enough for him to expose his deepest, darkest secret. (Parents, shield your children's eyes.) He likes progressive rock. Say it ain't so? It's true. Salzman says he's been getting back into some of the bands he grew up with as of late, one of those bands being Genesis when Peter Gabriel was the frontman. It is that style which Salzman cites as a reason his earliest songs have a certain amount of complexity to them. "Some progressive rock is so technical it loses its soul—still, late-'70s bands like Rush, Yes, and Jethro Tull have a lot of imagination," Salzman says. To take it a step further, Salzman underscores prog rock's key changes and ability to take off into far-reaching places as further evidence of the movement's affinity for classical music.

Eli also got a good dose of jam-band influence when he used to live in Vermont, and was able to get Phish tapes by simply going to the band's house. "I have a lot of different roots, and I like to go a lot of places with them. While people see me as a contemporary folk-rock guy, stuff like jam music and progressive rock is definitely in me."

Eli Salzman @ 418 Project

Looking for that special musician who speaks your language? Try **Eli Salzman** at 8 p.m. Sunday at the 418 Project.

Salzman has been performing his unique brand of soulful contemporary folk/progressive rock for more than 10 years. His eclectic use of chord arrangement blended with profound lyrical placement will surely leave you breathless.

The second half of the evening will include **Ken Mowry** on bass and **Bobby Stadler** on drums, which will cause the show to morph into totally uncharted territory.

Salzman is currently working on the production of his latest musical endeavor, which is charted for release this fall.

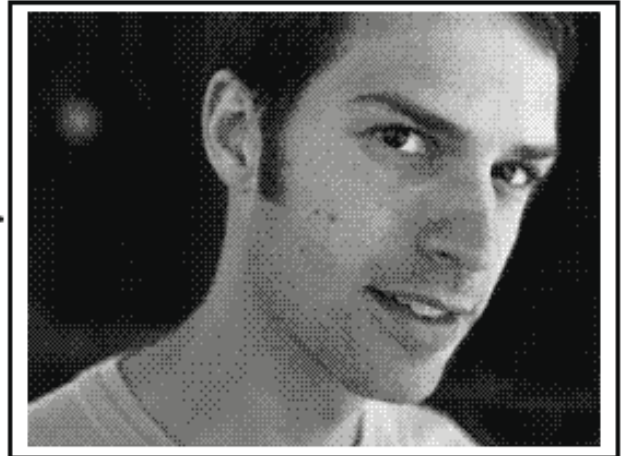
places i've played

Cabrillo College Main Stage, Aptos, CA
Actor's Theatre, Santa Cruz, CA
The Oxygen Bar, Hollywood, CA
The Blue Couch, Burlington, VT
The Rhombus Gallery, Burlington, VT
East Fairfield 4th of July Festival, E. Fairfield, VT
What is Art?, Santa Cruz, CA
The 418 Project. Santa Cruz, CA
Mobo Sushi, (monthly, 1998-2001) Santa Cruz, CA
The Crepe Place, Santa Cruz, CA
Arbor Day Festival, Santa Cruz, CA
The Santa Cruz Brewing Co./Front Street Pub, Santa Cruz, CA
Costa Brava, Santa Cruz, CA
Ideal Bar abd Grill, Santa Cruz, CA
Squid Row Alley Bazaar, (monthly '98-02) Santa Cruz, CA
Zelda's, Capitola, CA
Kuumbwa Jazz Center, Santa Cruz, CA
Whole Earth Restaurant, Santa Cruz, CA
The Cayuga Vault, Santa Cruz, CA
Performing Arts Second Stage, University of CA, Santa Cruz
Cell Space, San Francisco, CA
Hawk Hill, Scott's Valley, CA
The Labyrinth, Santa Cruz, CA

sample **press** release

Contact: Eli Salzman
Phone: hm. (831) 460-1467
E-mail: elisalzman@hotmail.com
www.elisalzman.com

[photo>>>>



FOR IMMEDIATE RELEASE
[date of release]

ELI SALZMAN Performs his songs at [venue name] [date of performance]

"Salzman is easily one of the most gifted musicians in town; he is a brilliant songwriter who brings to mind the work of Ben Harper and Stevie Wonder."
--David Espinoza, Metro Santa Cruz

Eli has been pushing the edges of soulful singing and songwriting for over a decade. His style is unusually rich and eclectic, drawing from alternative rock, blues, pop and modern influences. Audiences and critics describe his music and lyrics as deeply moving and often playful, sung with an expansive and resonant voice. And with his inventive guitar-work, infectious rhythms and improvisations, you get an experience that fits in your ears, gets in your bones and pulls you into territories un-charted by the packaged music world.

Eli has a Live CD out and just released a brand new studio album entitled "Baby Flame" in July 2002. "Baby Flame's" rich and powerful sound marks a new era in Eli's contribution to the world of original music.

WHEN: [date of performance]

WHERE: [venue name, description, street address and contact info]

TICKETS: [price of tickets, where they are sold, are there advance ticket sales?]

INFO: 831-460-1467, elisalzman@hotmail.com, and www.elisalzman.com